

## ⚠ Heater Replacement - Safety

### Product Safety Information - Refractory Ceramic Fibre Product

**⚠WARNING:** This product contains a substance which has been identified by the International Agency for Research of Cancer (IARC) as possible carcinogenic to humans.

**Risks:**

- Possible cancer hazard by inhalation.
- May cause temporary irritation to eyes, skin and respiratory tract.
- Potential for Fire, Smoke, and Asphyxiation Hazards.



**To the Equipment Owner:** Please read and carefully follow all instructions provided in the manual regarding your responsibilities in caring for your heating equipment. Contact a professional, qualified service agency for installation, start-up or service work.

**Precautionary Measures:**

- Minimize air born fibres with engineering controls.
- Wear NIOSH/MSHA approved respirator.
- Wear long sleeved, loose fitting clothing, eye protection and gloves.
- Wash work clothing separately and rinse washing machine after use.

**First Aid Measures:**

- Eyes: Flush with water.
- Skin: Wash with soap.
- Ingestion: Do not induce vomiting. Get medical attention if gastrointestinal symptoms develop.
- Inhalation: Move to fresh clean air.

**If any of the above irritations persist, seek medical attention immediately.**

**For additional product information and work practices refer to the material safety data sheet.**

Burner Box should be inspected yearly and replaced if it shows signs of cracking and or breaking.

The above cautions should be taken when removing and installing the burner box.

**Read these instructions and save for reference.**

- Maintenance

---

⚠ Turn Propane Valve Off Before Servicing Heater.

⚠ **WARNING:** To avoid personal injury, turn the heater off and allow to cool.

Step 1) Remove damaged heater from the machine.

⚠ CAUTION

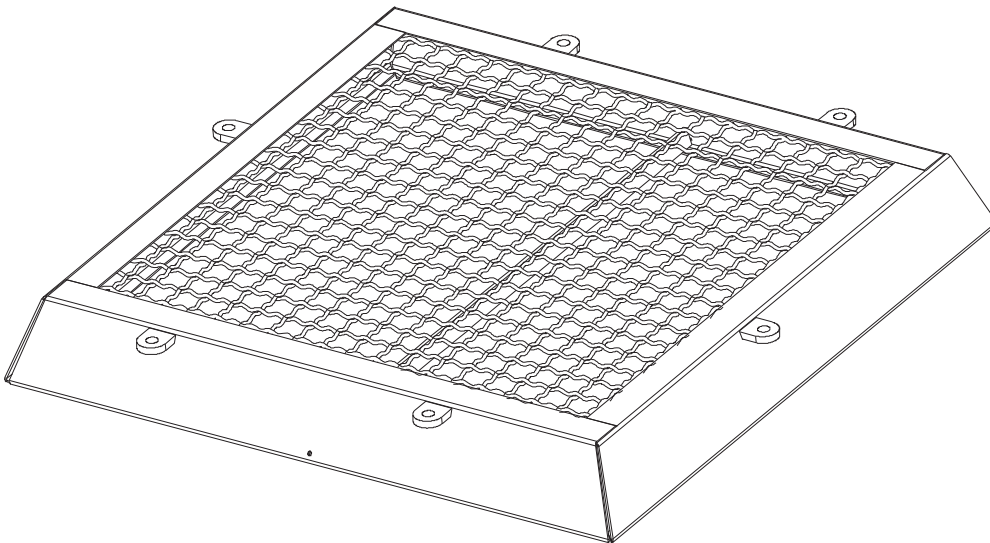
Step 2) Turn the heater upside down and run water over top of the ceramic. This will eliminate the fibres from travelling through the air.

Step 3) Remove the six bolts that hold the heater together.

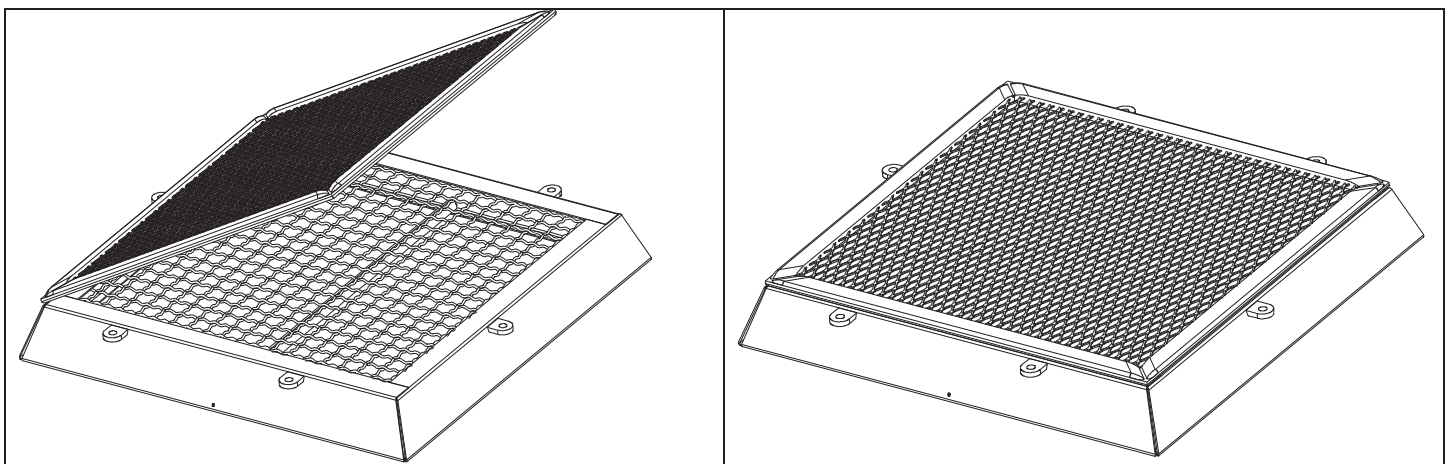
Step 4) Remove the top portion of the heater (plenum).

Step 5) Remove the heater cartridge and place in a garbage bag.

Step 6) Place the heater skirt on a flat surface.



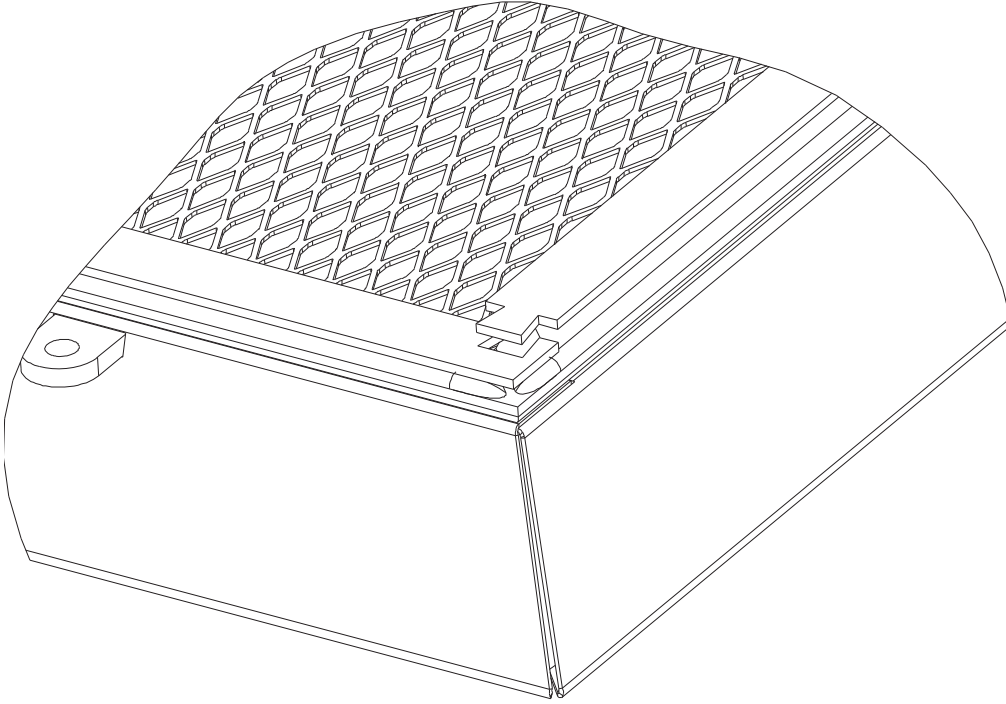
Step 7) Place the heater cartridge with the ceramic facing down on top of the heater skirt.



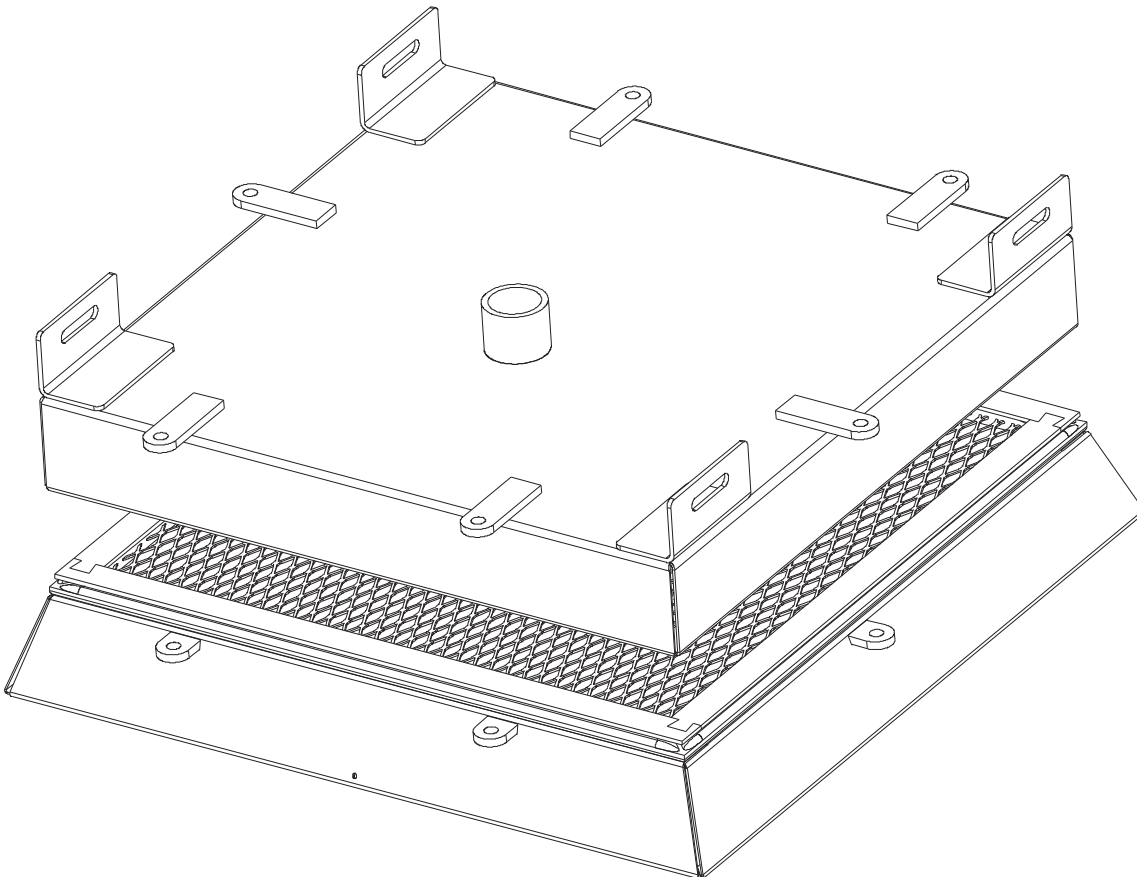
- **Maintenance**

---

Step 8) Place the ceramic gaskets in place

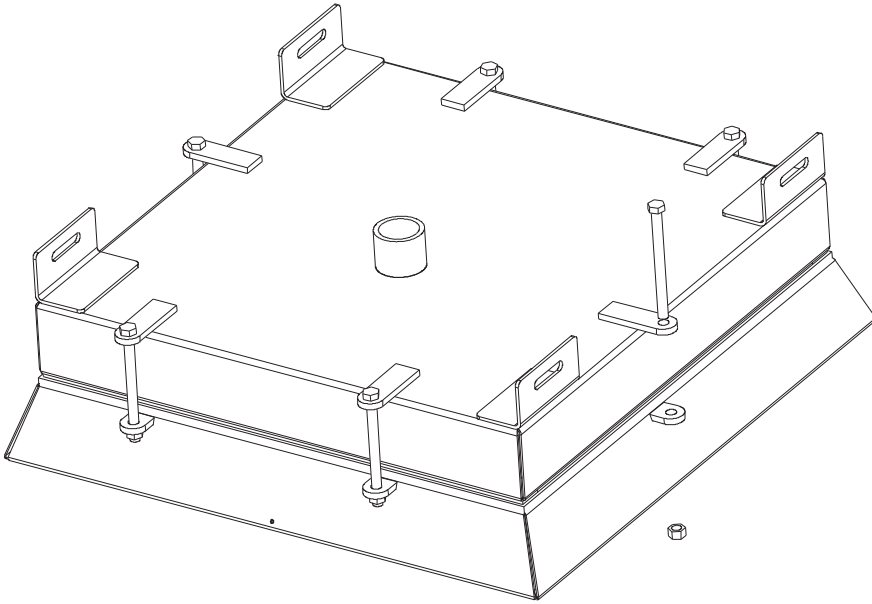


Step 9) Carefully place the heater plenum on top of the gaskets. Make sure the gaskets do not shift.



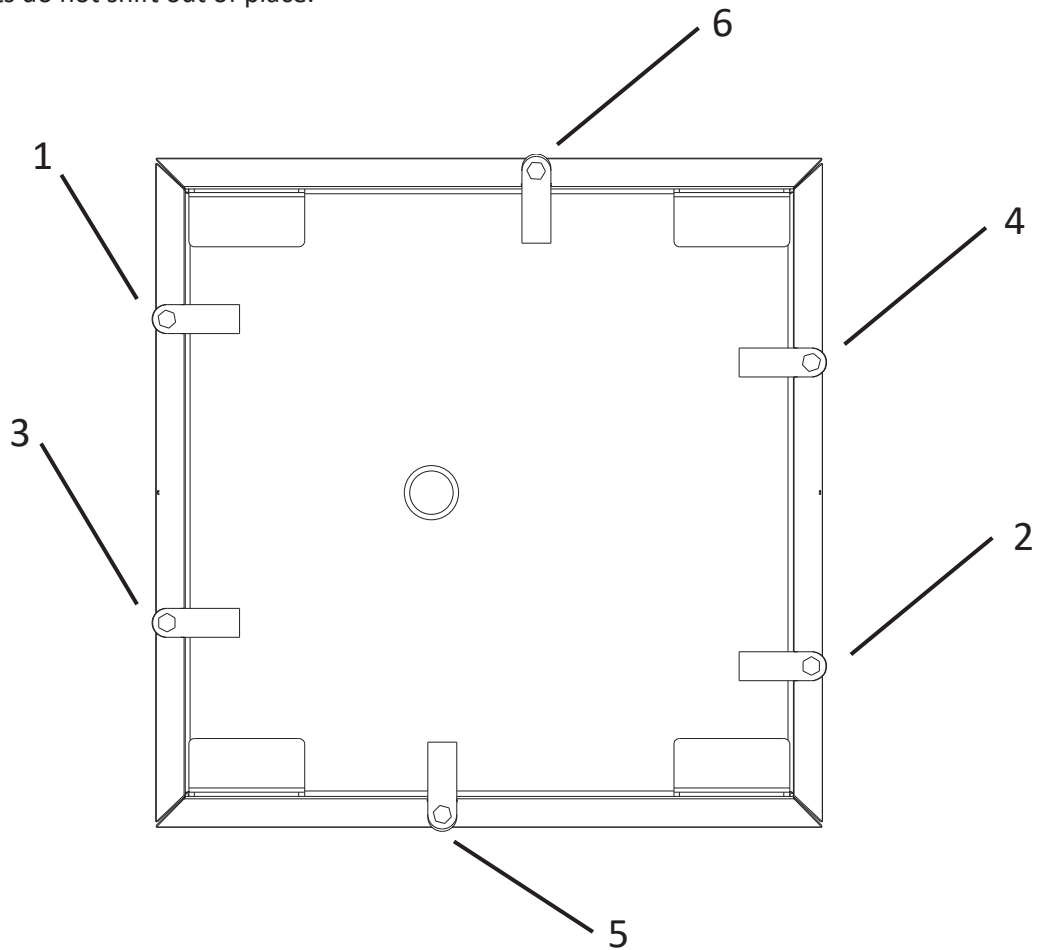
- **Maintenance**

Step 10) Install bolts and hand tighten in a figure eight type pattern. The bolts should be tightened with the pattern shown below.



Heater Assembly Torque Pattern: Using A Torque Wrench Follow the Pattern Shown Tightening Bolts To 90 in-lbs.

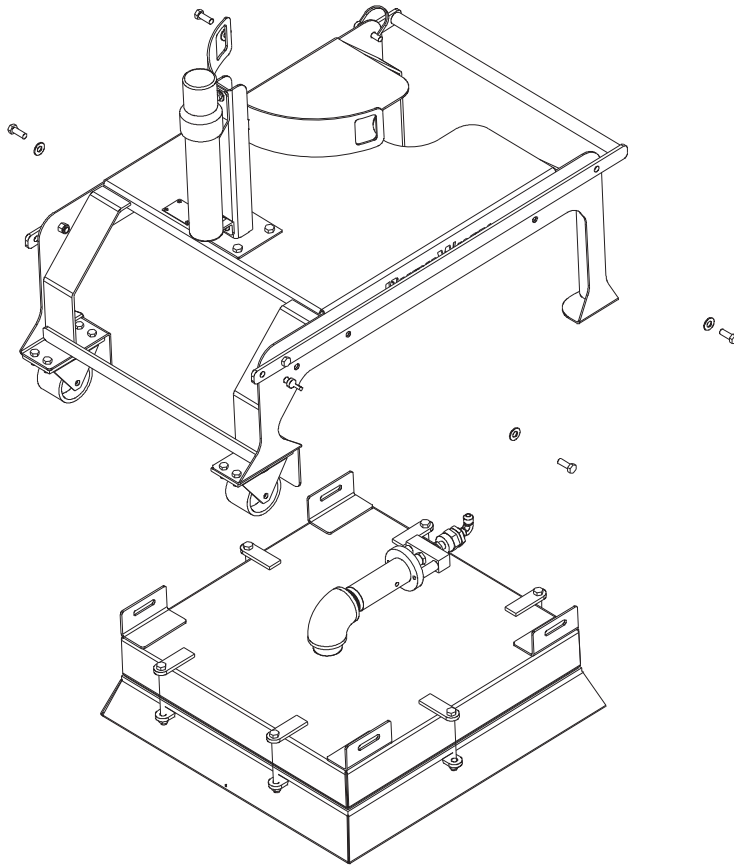
Notes: Make sure skirt, cartridge, gasket, and top are square to each other so that the gasket is not over hanging over the edge or pressed in. The gasket may require adjustment as the bolts are tightened. While tightening the bolts make sure that the gaskets do not shift out of place.



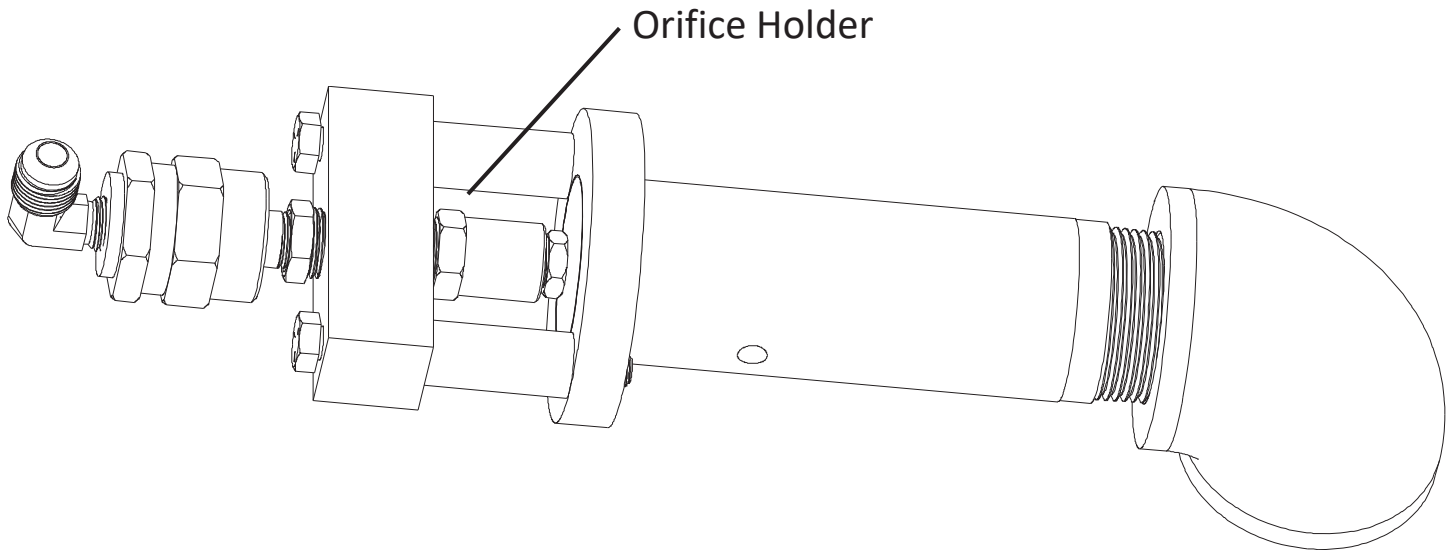
- Maintenance

## Venturi Maintenance

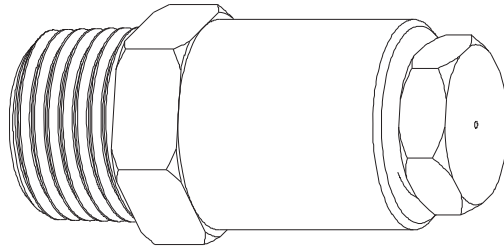
Step 1) Remove the heater assembly from the frame.



Step 2) Remove Brass Orifice holder by turning it counter clockwise using a 3/4" wrench.



Step 3) Inspect orifice\* for any debris. Remove the debris. If the orifice is severely plugged you may need to use compressed air. Check distance to inspirator.



**⚠ CAUTION: Do not use torch tip cleaners. This may increase the size or angle of the orifice. This will cause the heater to perform poorly.**

Step 4) Re-tighten the orifice holder ensuring there is a small amount of pipe sealant on the threads. Dim A - Approx. Flush  
Suggested: Clean filter once a year (item 1)

