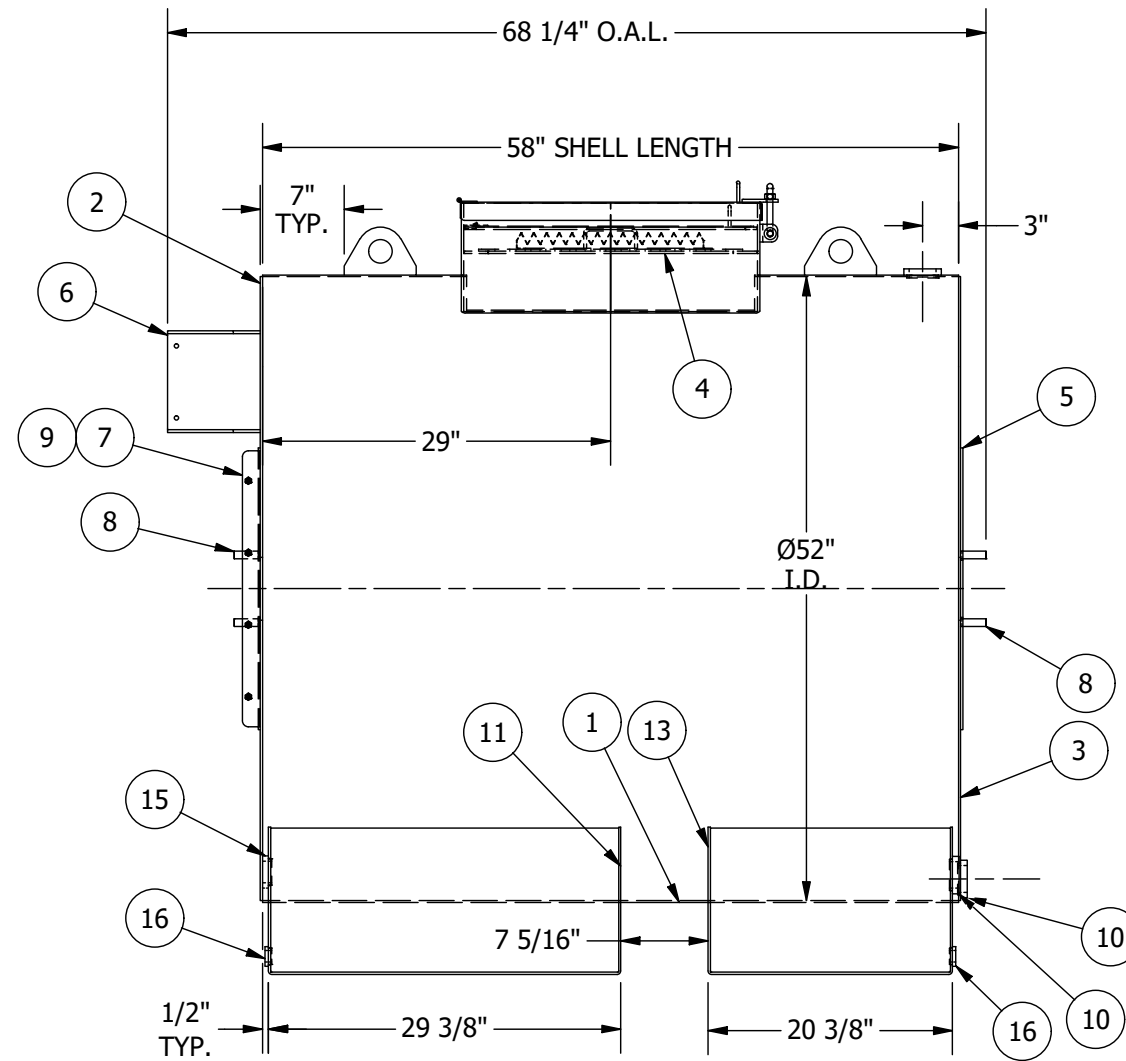
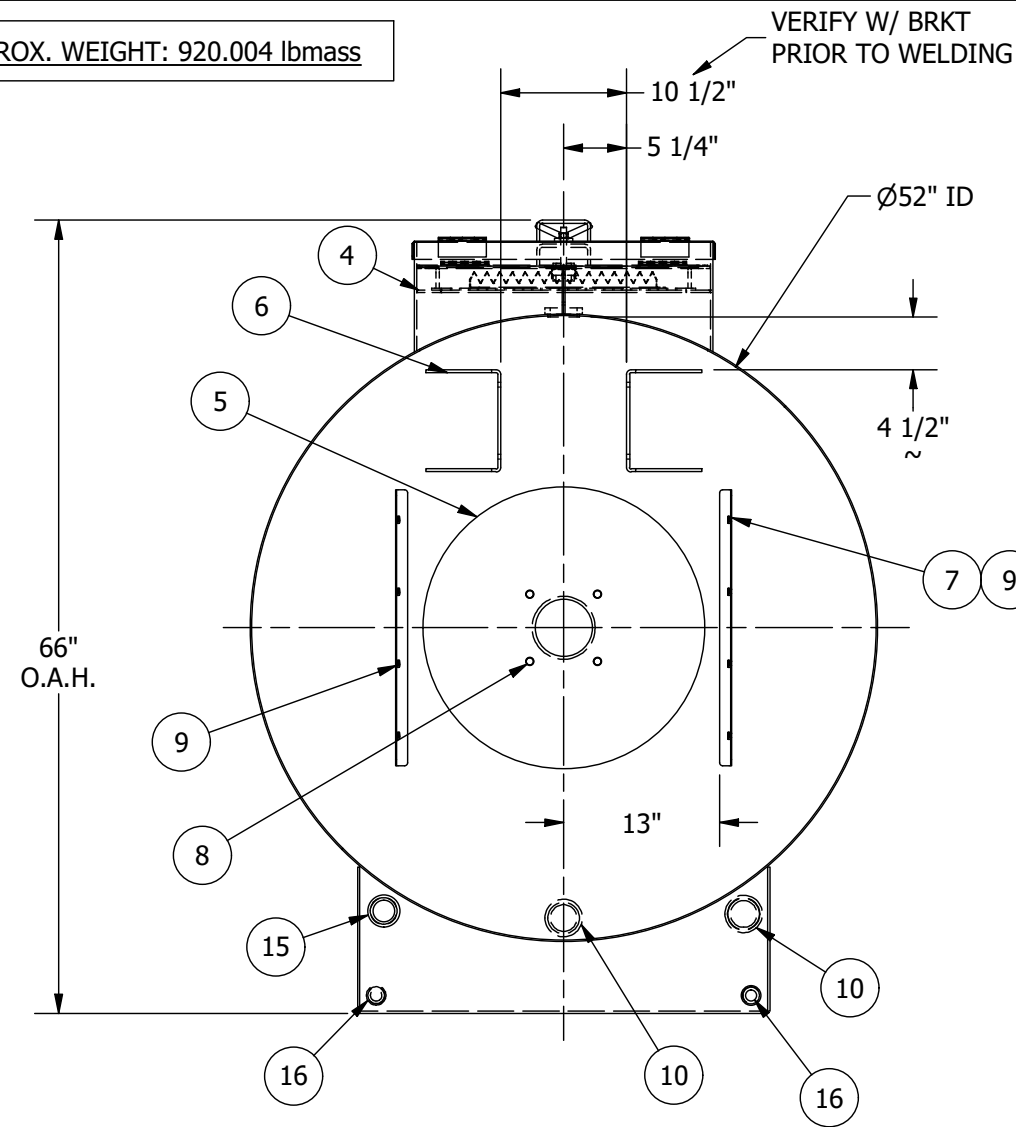


APPROX. WEIGHT: 920.004 lbmass



ITEM #	QTY.	SIZE / THICK	MATERIAL	DESCRIPTION	PART NUMBER
14	2	7 GA.	CS, HR P&O, ASTM A1011	FUEL TANK SADDLE END - 500 GAL	52277-00
12	2	7 GA.	CS, HR P&O, ASTM A1011	WATER TANK SKID END - 500 GAL	52275-00
17	2	1/4" THK.	CS, HR ASTM A36	PLATE LIFT LUG	52278-00
16	2	3/4"	Iron, Ductile	FORGED FLANGE W/ PILOT, 394 SERIES	70828
15	1	1 1/2"	Iron, Ductile	FORGED FLANGE W/ PILOT, 397 SERIES	70830
13	1	7 GA.	CS, HR P&O, ASTM A1011	FUEL TANK SADDLE - 500 GAL	52276-00
11	1	7 GA.	CS, HR P&O, ASTM A1011	WATER TANK SADDLE - 500 GAL	52274-00
10	3	2"	Iron, Ductile	FORGED FLANGE W/ PILOT, 398 SERIES	70867
9	8	1/4"-20UNC	Steel	NUT, WELD, 1/4-20, STL, SQ.	70241
8	8	5/8" - 11 UNC X 2" LONG	Steel	WELD STUD	75018
7	2	14 GA.	CS, HR P&O, ASTM A1011	SPRT GUARD MNT BRKT, SEAL COAT STORAGE TANKS	51042-00
6	2	1/4" THK.	CS, HR ASTM A36	MOUNT GUSSET - HYDR MOTOR	51863-00
5	2	7 GA.	CS, HR P&O, ASTM A1011	HEAD REINFORCING PLATE	52209-00
4	1	SEE BOM	CS, HR P&O, ASTM A1011	WLDM'T, SEAL COAT ACCESS MANWAY - 500 GAL	30418-00
3	1	7 GA.	CS, HR P&O, ASTM A1011	BACK HEAD - 500 GAL TRUCK MNT	52273-00
2	1	7 GA.	CS, HR P&O, ASTM A1011	FRONT HEAD - 500 GAL TRUCK MNT	52272-00
1	1	10 GA.	CS, HR P&O, ASTM A1011	WLDM'T, SHELL SECTION W/ MWY HOLE STORAGE TANK - 500 GAL	30417-00

MATERIAL SCHEDULE

ISSUE	ECR#	REVISION DESCRIPTION	REV. DATE	APP'D BY
1		INITIAL RELEASE.	2/19/20	SSMITH

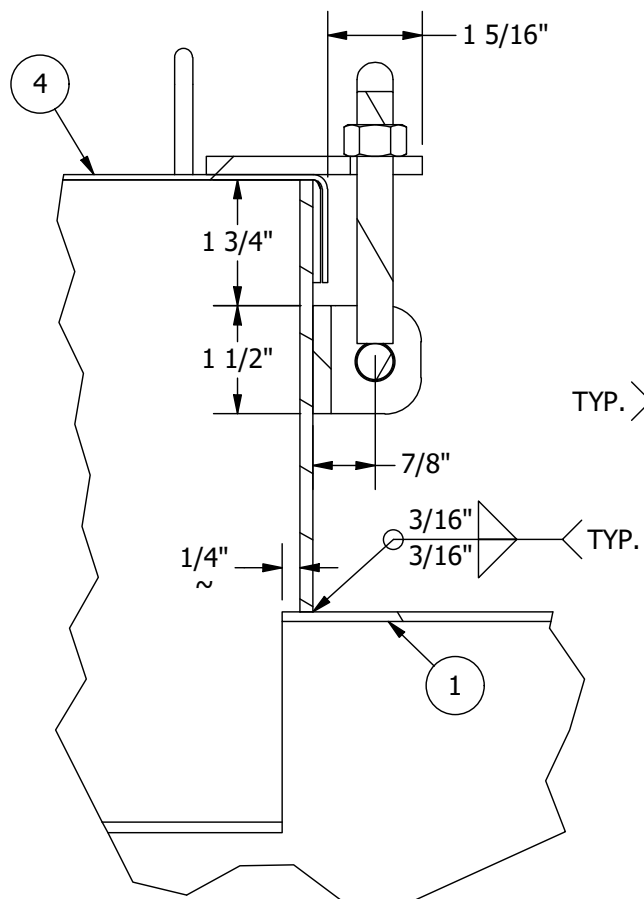


SCALE:	CHECKED BY:	DRAWN BY: SSMITH
DATE: 3/19/2020	APPROVED BY:	REVISION: 1

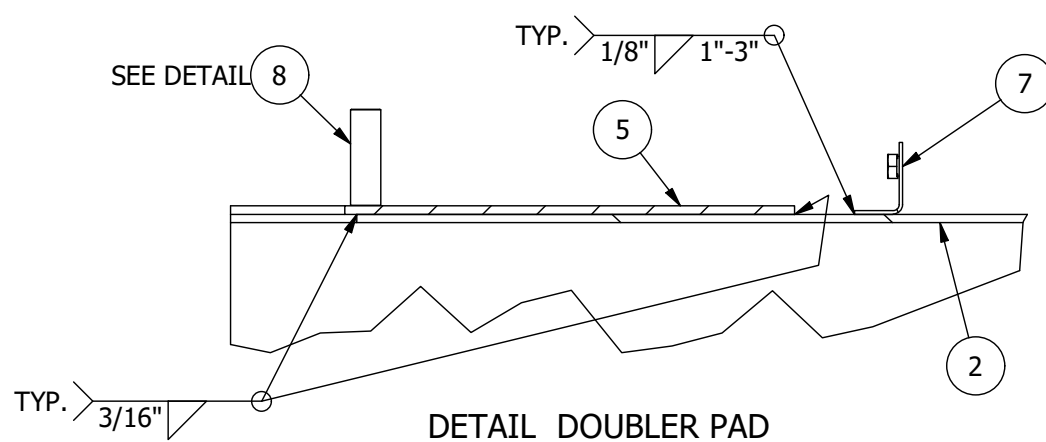
DESCRIPTION:
WLDM'T, SEAL COAT TRUCK TANK - 500 GAL (SC500TM)

JOB:	DRAWING NUMBER: 30416-00.dwg
------	---------------------------------

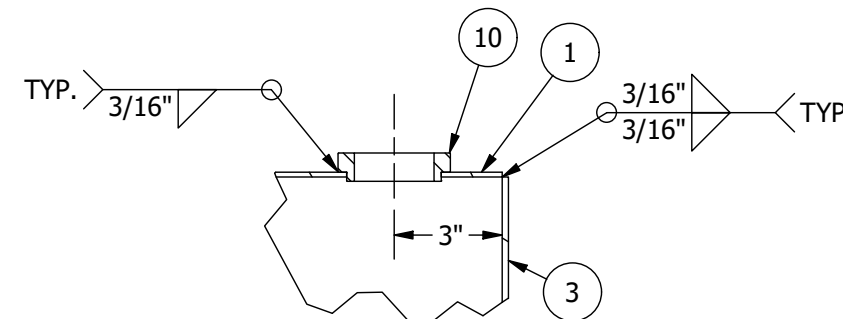
NOTE! DO NOT SCALE THIS DRAWING!



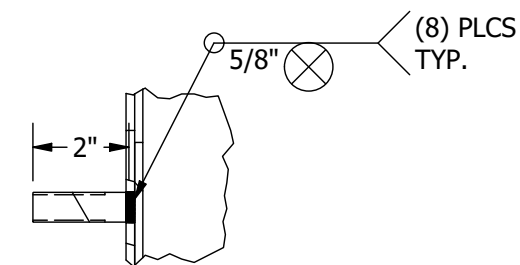
DETAIL MANWAY NECK



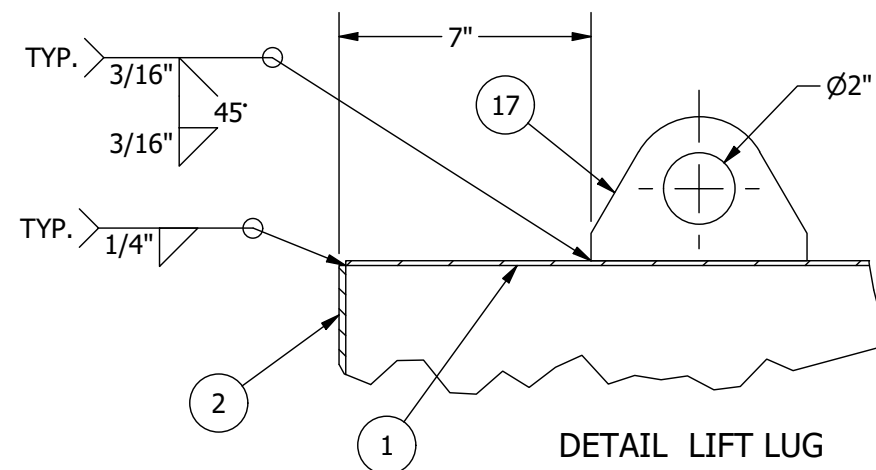
DETAIL DOUBLER PAD



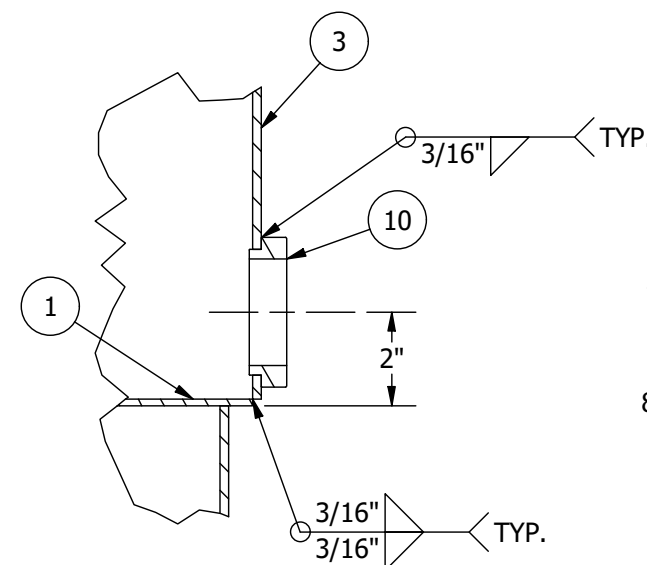
DETAIL NOZZLE



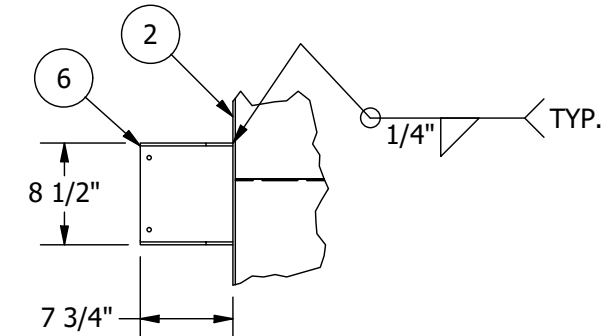
DETAIL WELD STUD



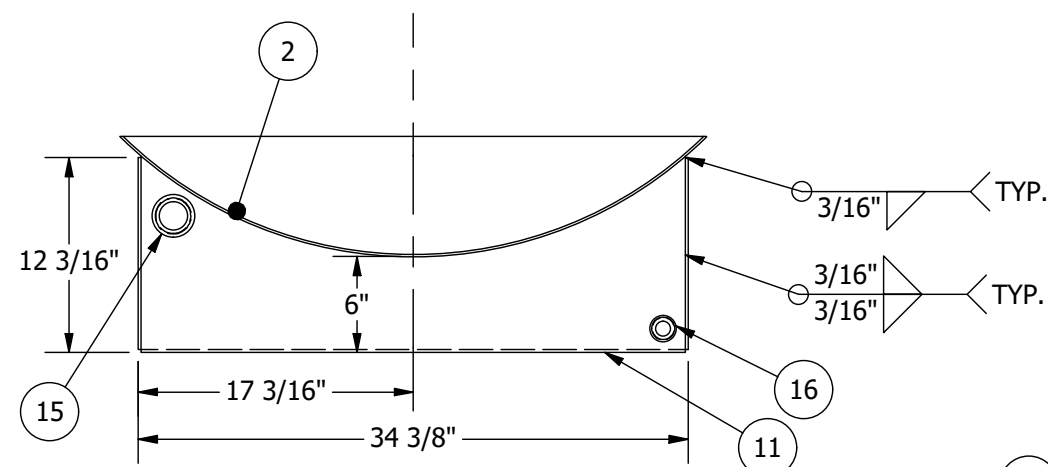
DETAIL LIFT LUG



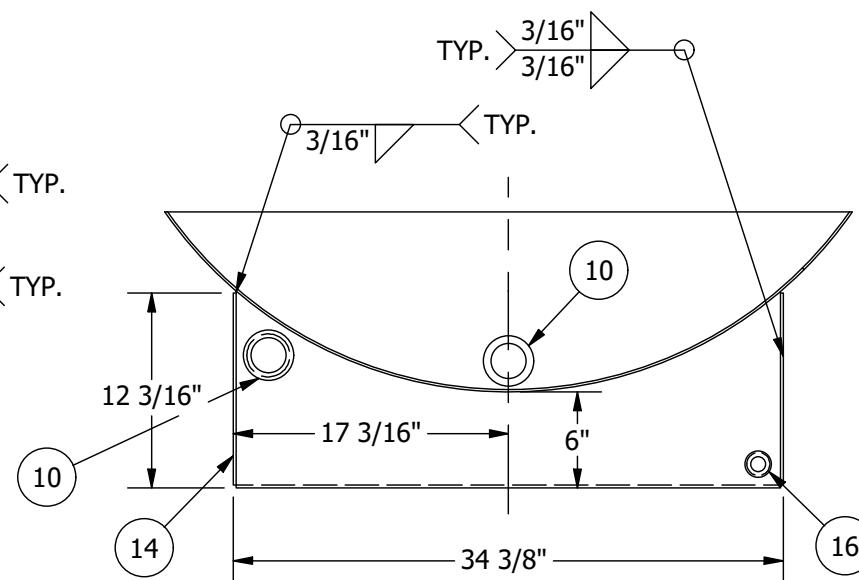
DETAIL NOZZLE



DETAIL HYD MOTOR BRKT



WATER TANK SADDLE DETAIL



FUEL TANK SADDLE DETAIL

REV. DATE	ISSUE	REVISION DESCRIPTION	APP'D BY
2/19/20	1	INITIAL RELEASE.	SSMITH

ASPHALT KINGDOM

SCALE:	CHECKED BY:	DRAWN BY: SSMITH
DATE: 3/19/2020	APPROVED BY:	REVISION: 1

DESCRIPTION:
WLDM'T, SEAL COAT TRUCK TANK - 500 GAL (SC500TM)

JOB:	DRAWING NUMBER: 30416-00.dwg
------	---------------------------------

NOTE! DO NOT SCALE THIS DRAWING!