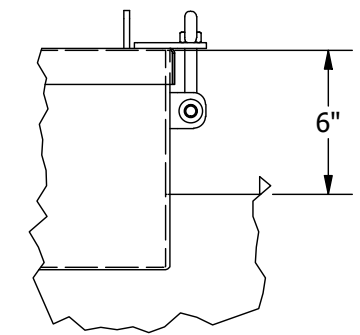
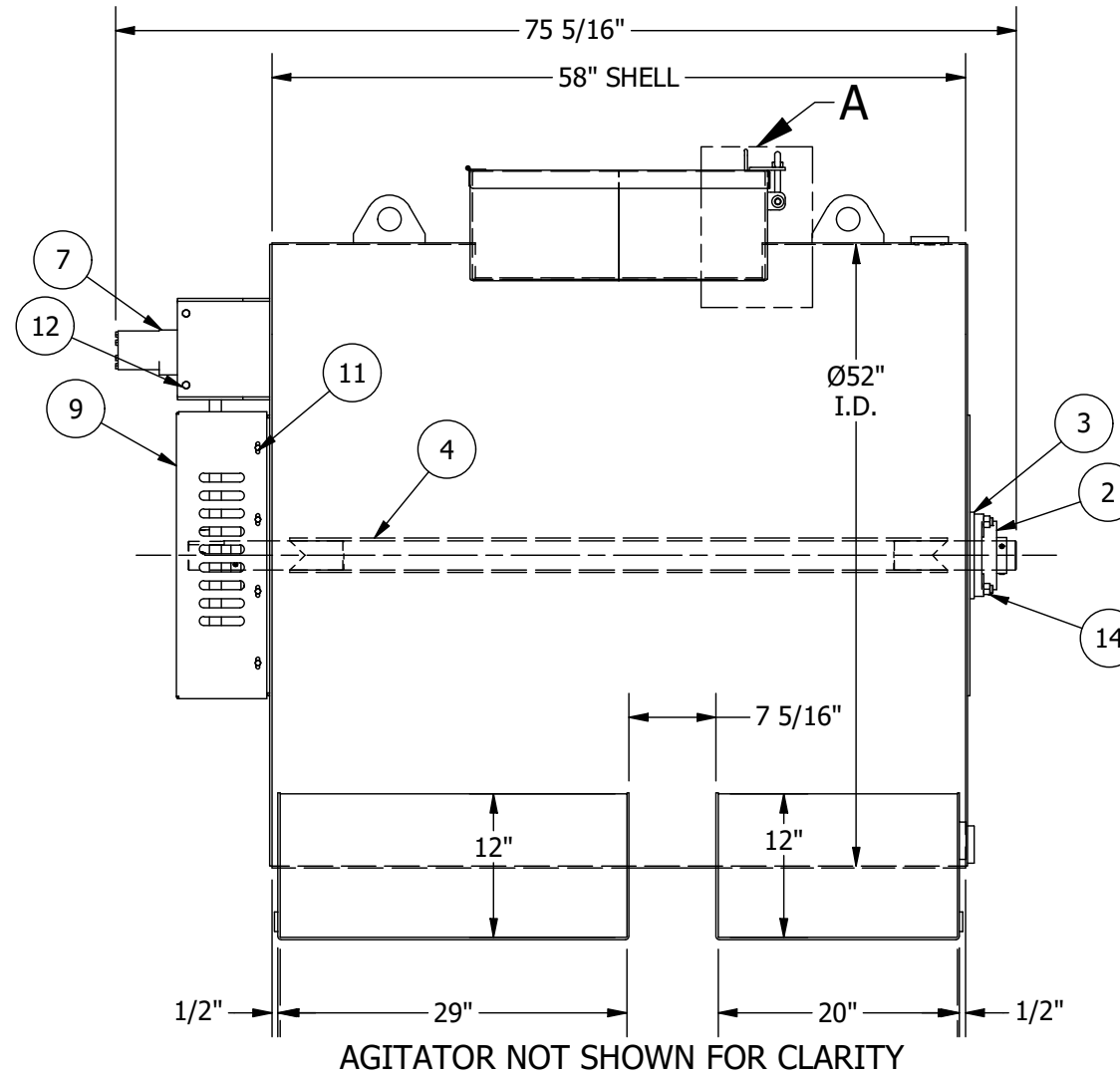
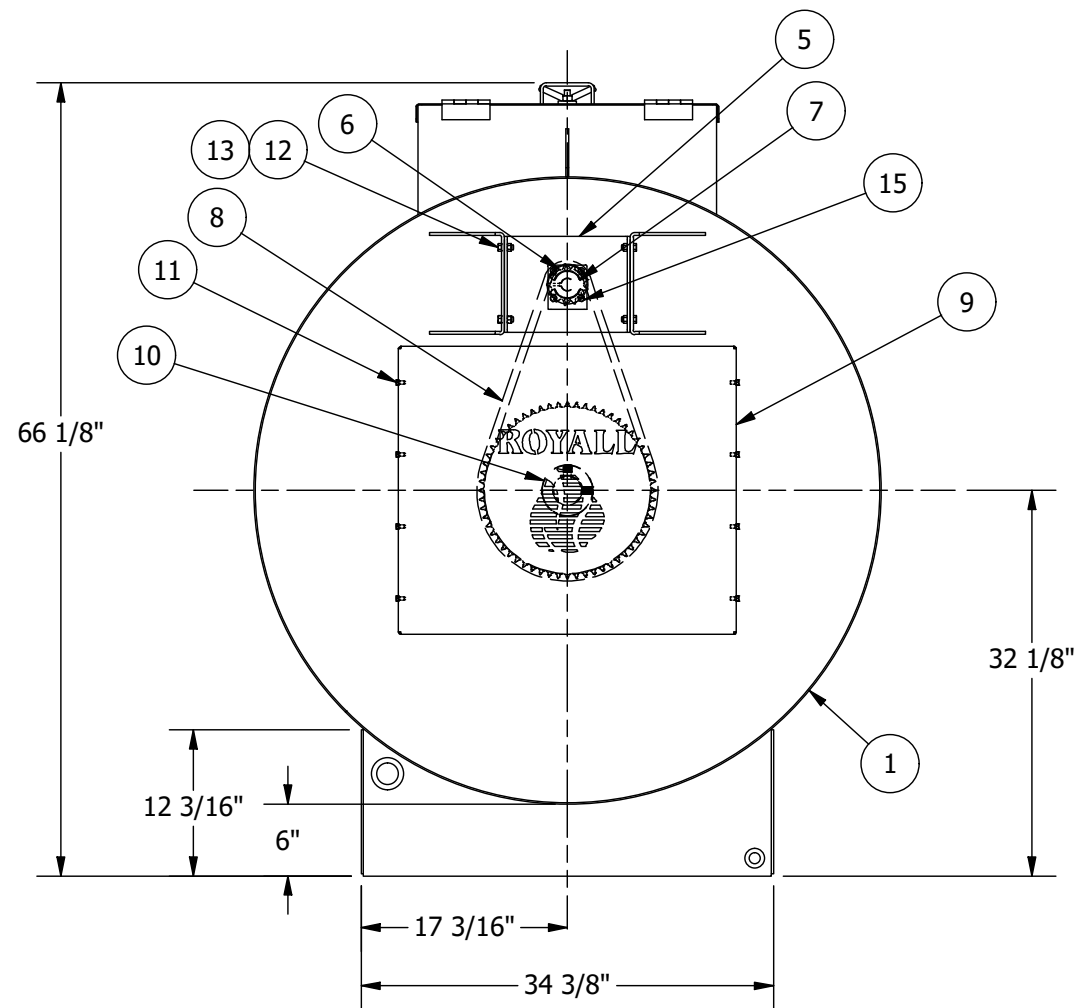


APPROX. WEIGHT: 1194.777 lbmass



DETAIL A

ITEM #	QTY.	SIZE / THICK	MATERIAL	DESCRIPTION	PART NUMBER
10	1	14 3/4" DIA.	Steel	DRIVEN SPRKT - NO.60 (3/4" ANSI) PITCH, 60 TEETH, TYPE B	71712
15	4	5/16-18 UNC - 3/4" LG.	Steel	HEX BOLT	
14	8	5/8 - 11UNC	Steel	HEX NUT	
13	4	3/8 - 16UNC	Steel	HEX NUT	
12	4	3/8-16UNC - 1" LG.	Steel	HEX BOLT	
11	8	1/4-20UNC - 1/2" LG.	Steel	HEX BOLT	
9	1	14 GA.	CS, HR P&O, ASTM A1011	SPRT GUARD, SEAL COAT STORAGE TANKS	51041-00
8	1	3/4" PITCH x #60 HD	Steel	#60 HD RIVETED ROLLER CHAIN - 3/4" PITCH X ~65" LG.	71685
7	1	--	Steel	HYDR MOTOR - 1" DIA. SHAFT/ 300 IN-LB TORQUE	70938
6	1	3 1/2" DIA.	Steel	DRIVING SPRKT - NO.60, (3/4" ANSI) PITCH, 13 TEETH, TYPE B	70941
5	1	1/4" THK.	CS, HR ASTM A36	MOUNT BRKT FOR SPRKT - HYDR MOTOR	51040-00
4	1	SEE BOM	SEE BOM	WLDM'T, AGITATOR FULL SWEEP A/, SEAL COAT 500 GAL	30419-00
3	2	3/8" THK.	Rubber	RUBBER BRG BLOCK SEAL - 2-7/16" DIA.	70930
2	2	2 7/16" DIA.	Steel	4-BOLT FLG-MNT'D BALL BRG - 2-7/16" SHAFT DIA	70928
1	1	SEE BOM	CS, HR P&O, ASTM A1011	WLDM'T, SEAL COAT TRUCK TANK - 500 GAL (SC500TM)	30416-00

MATERIAL SCHEDULE

ISSUE	ECR#	REVISION DESCRIPTION	REV. DATE	APP'D BY
1		INITIAL RELEASE.	2/19/20	SSMITH



SCALE:	CHECKED BY:	DRAWN BY: SSMITH
DATE: 3/19/2020	APPROVED BY:	REVISION: 1

DESCRIPTION:	
SEAL COAT TRUCK TANK - 500 GAL (SC500TM) A/	
JOB:	DRAWING NUMBER: 10099-00

NOTE! DO NOT SCALE THIS DRAWING!